



# ***LOSS PREVENTION SOLUTIONS***

**NEW POLYCARBONATE SECURITY CASE:  
VIRTUALLY INDESTRUCTIBLE & LOWER COST**

**MARCH 2023**



**Recycled Engineered  
Solid Surface Materials**

# NEW SECURITY CASE

## **CURRENT SECURITY CASE PROBLEM:**

- Mostly made of glass and can break
- More expensive than they need to be
- Visually disruptive
- Not easy to install

## **NEW TRINITY SECURITY CASE SOLUTION:**

- Design uses virtually unbreakable polycarbonate. Same material as “hockey rink” glass.
- Less expensive!!
- Easy to install...door and frame assembly comes pre-assembled.
- Attaches to existing store fixtures.

# CURRENT GLASS CASE EXAMPLES

Baby Formula



Electronics



Personal Care



Fragrance





# TRINITY IS AN EXPERT IN DESIGNING & MAKING LOCKED CASES AT RETAIL

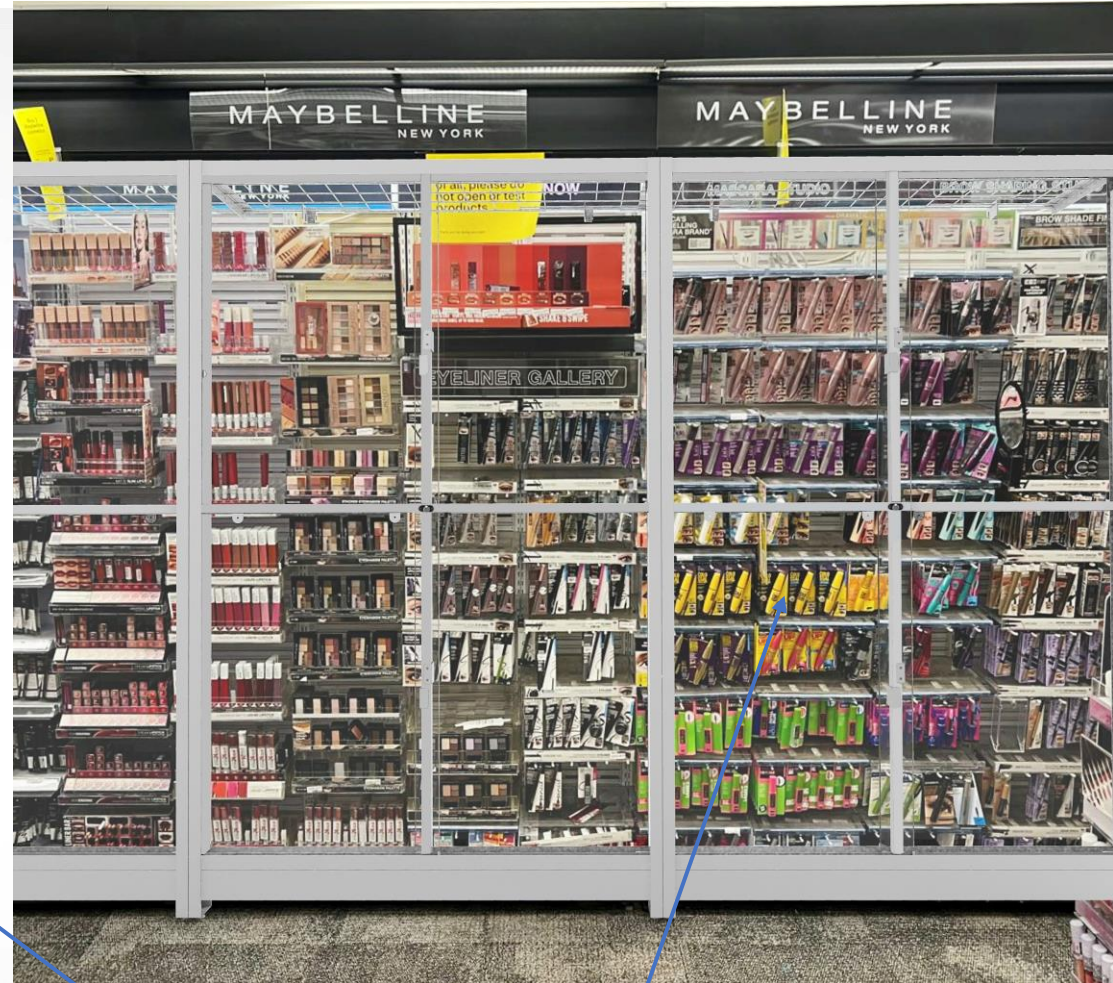


While TRINITY has made thousands of easy-to-install hi & low profile locked glass cases allowing good shoppability & security. However...we have recognized opportunities to drastically reduce door breakage and lower costs with a polycarbonate solution.



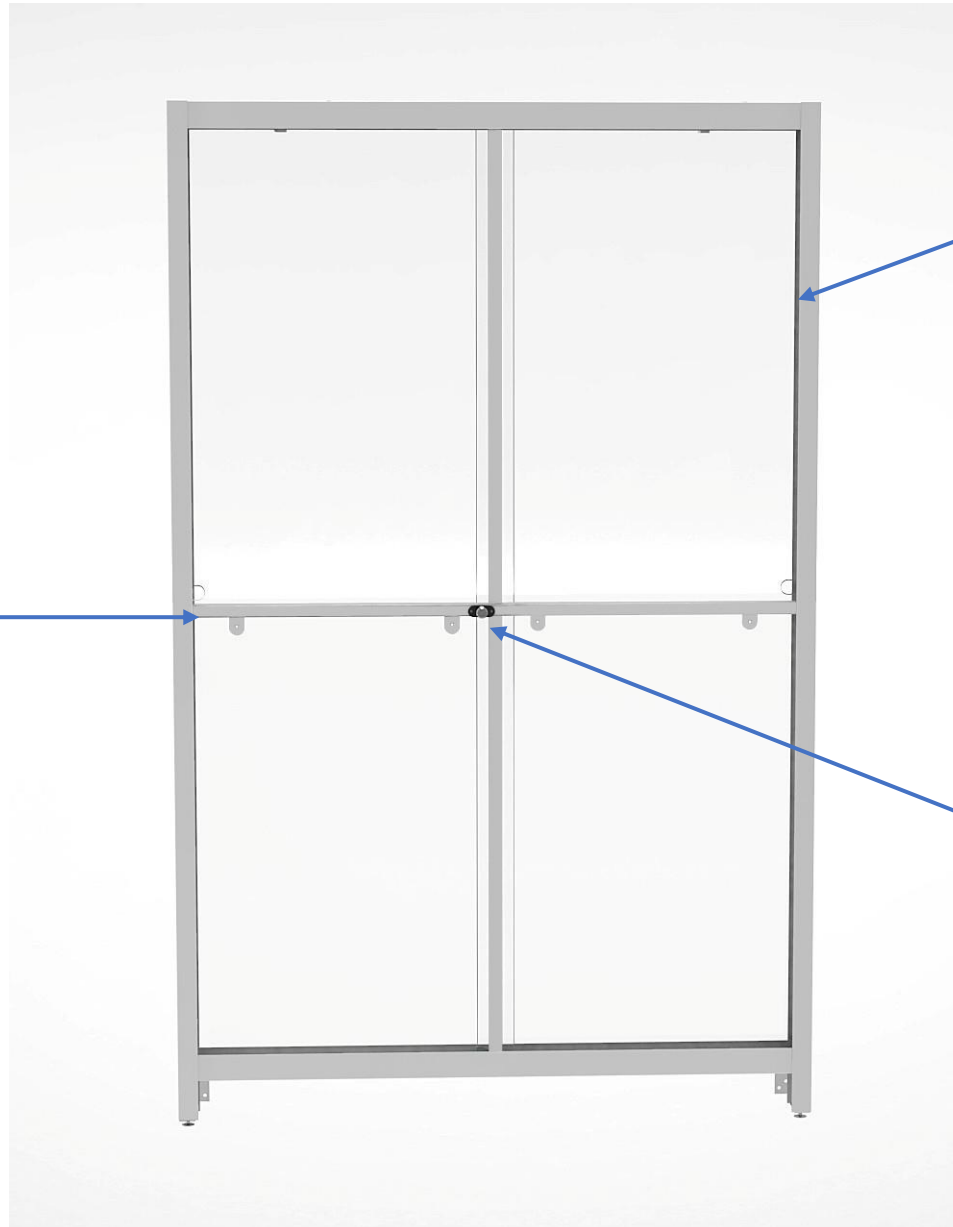
# RECOMMENDED CONSTRUCTION

A super-secure easy-to-assemble system that will keep thieves out via super-strong & durable clear polycarbonate doors while maintaining maximum product visibility!



Polycarbonate clear doors are virtually indestructible! THINK HOCKEY RINK GLASS

# CONSTRUCTION OVERVIEW



A welded T-frame construction that is very robust and comes pre-assembled for easy installation.

A plunger style lock that is easy to unlock, and re-lock. Remains in position on door.

A minimalistic crossbar that does not disrupt view of product.

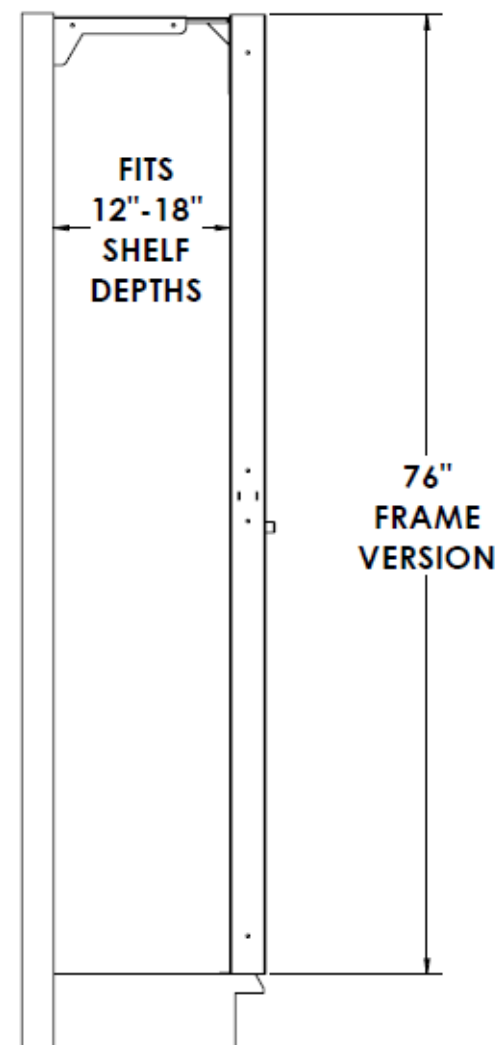
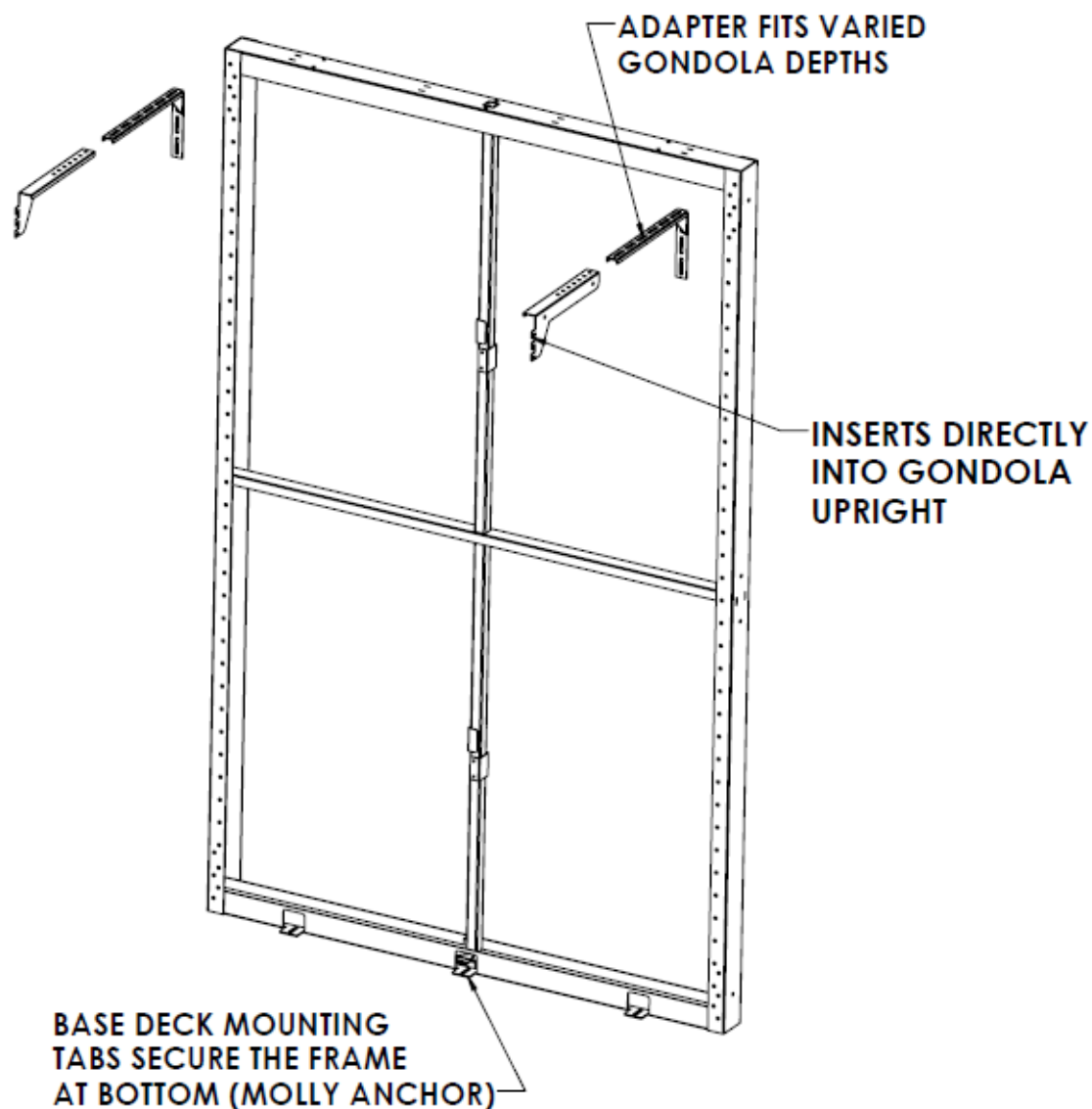
# STRONG, EASY TO USE PLUNGER LOCK



PATENT  
PENDING

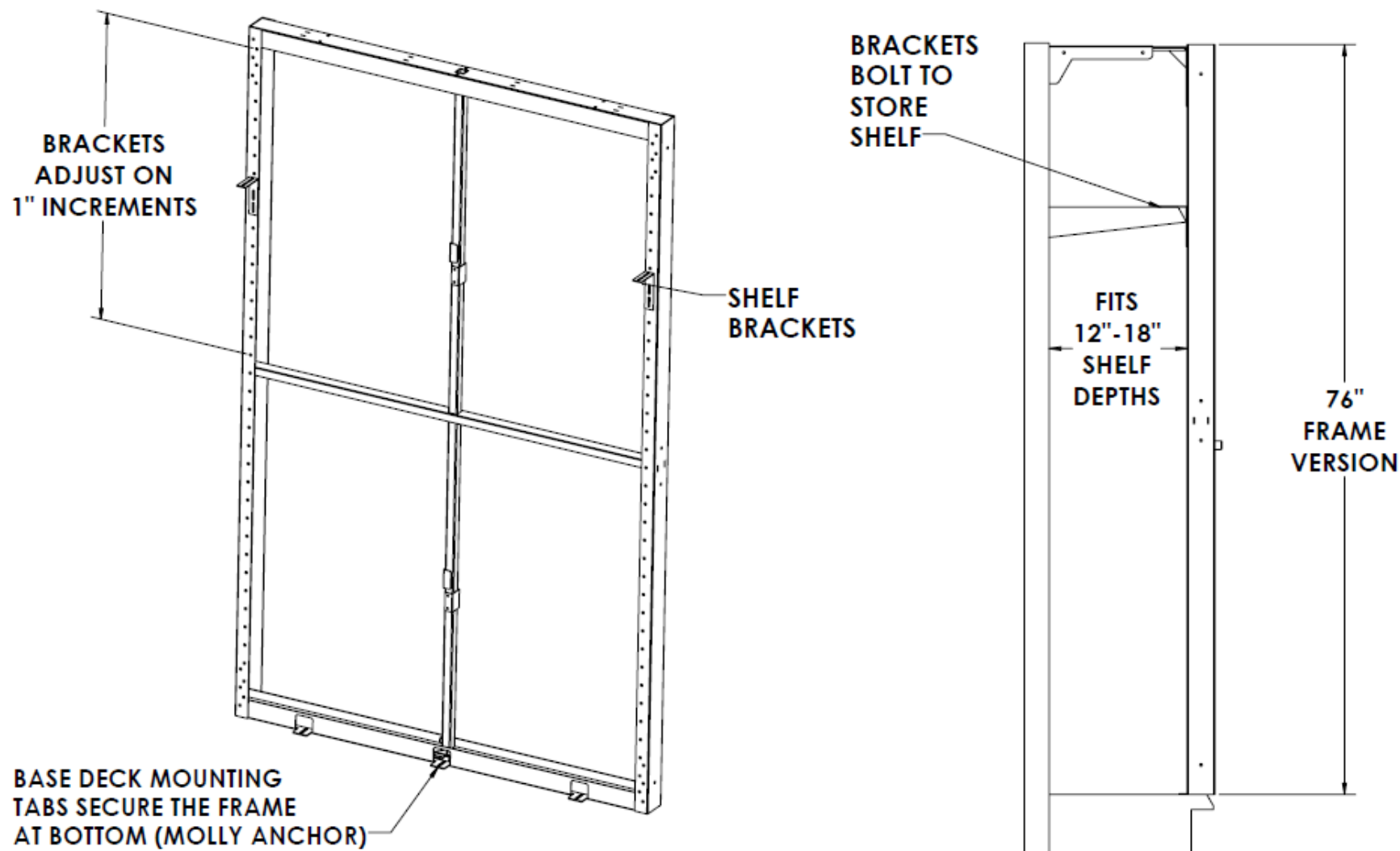
Simple to use and maintain “plunger lock” stays locked position under huge stress while being easy to open and close by store associate.

# ATTACHMENT TO GONDOLA VIA BRACKETS & MOLLY





# ATTACHMENT TO GONDOLA VIA SHELF



# SOLUTION RENDERING: COSMETICS



Excellent overall aesthetics and visibility! Plus, product trays are set back about 2" allowing for product behind the cross-bar to be easily seen by the shopper. Inside lighting can be easily added to enhance the impact.



# MID-PROFILE SECURITY CASE



Mid-profile personal care section (or could be any number of other products) with TRINITY Polycarbonate Security Case. Aesthetically and visually good for shopping.



# END-CAP SECURITY CASE



End-Cap TRINITY Polycarbonate Security Case. Visually good for shopping and keeps this product safe too. Think creatively and let us help you!





60 Leonard Street  
Metuchen, NJ 08840  
TEL: 732-549-2866  
FAX: 732-549-5521  
Toll-Free: 866-450-6654  
[www.trinityinstore.com](http://www.trinityinstore.com)