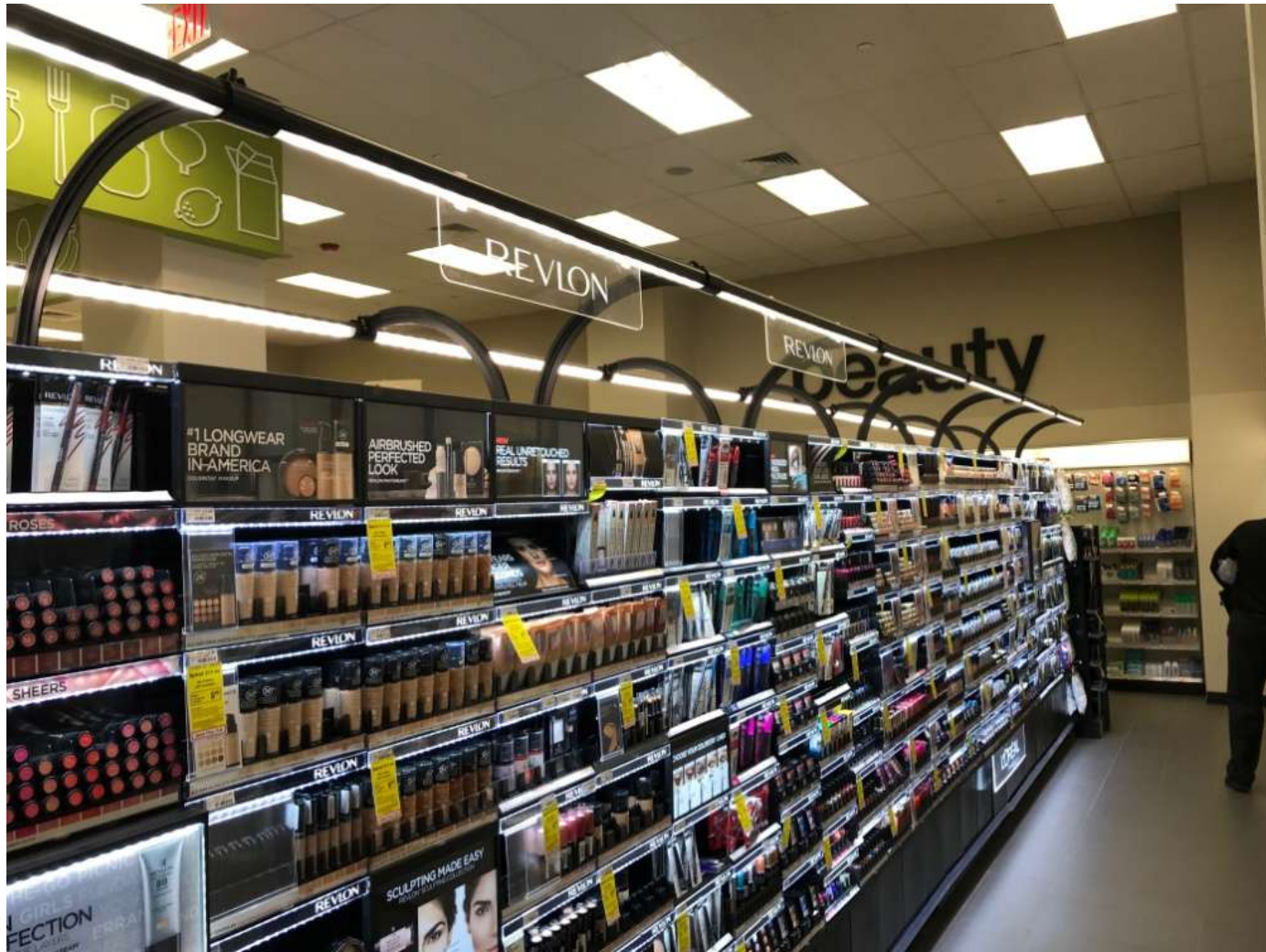


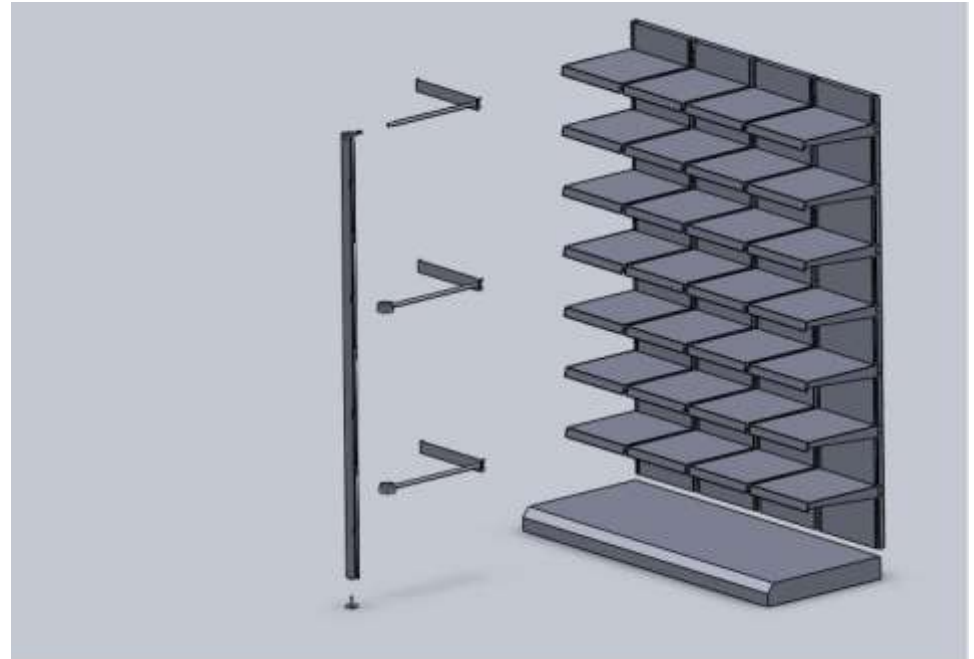
WHAT'S NEW: Nov. 2017



LED LIGHT POLE



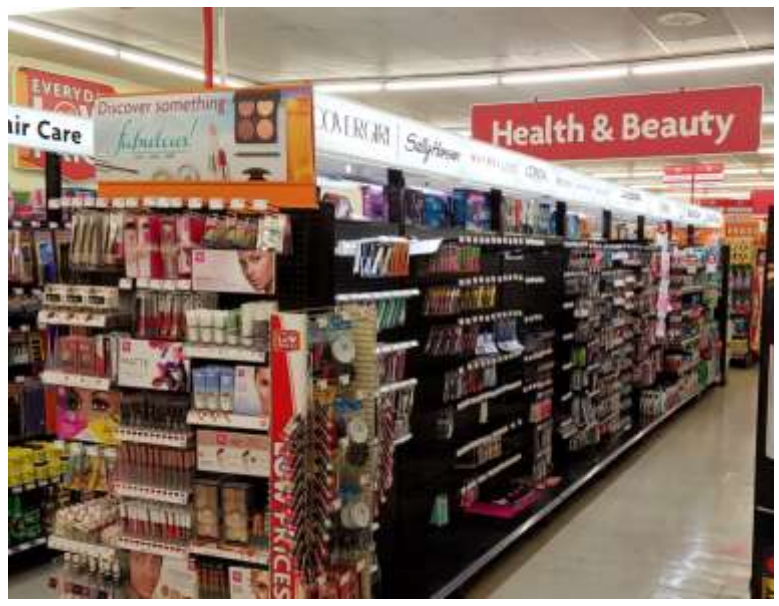
LED LIGHT POLE



FEATURES:

- RETRO-FITS TO EXISTING IN-LINE SETS
- ALTERNATIVE TO INDIVIDUAL SHELF LIGHTING OR HEADER VALANCE
- SPREADS EVEN BLANKET OF LIGHT ONTO THE IN-LINE SET
- BRANDING/COMMUNICATION OPPORTUNITY

UNI-BODY LED CORNICE



UNI-BODY LED CORNICE



Features:

- Daisy-Chain Connectivity – Long Continuous Runs
- Convenience Outlet to Plug In Low Voltage Items Below
- Single Body Construction
- Backlighting – 9W
- Downlighting – 9W
- Cost Effective
- UL Listed



UNIVERSAL LED CORNICE



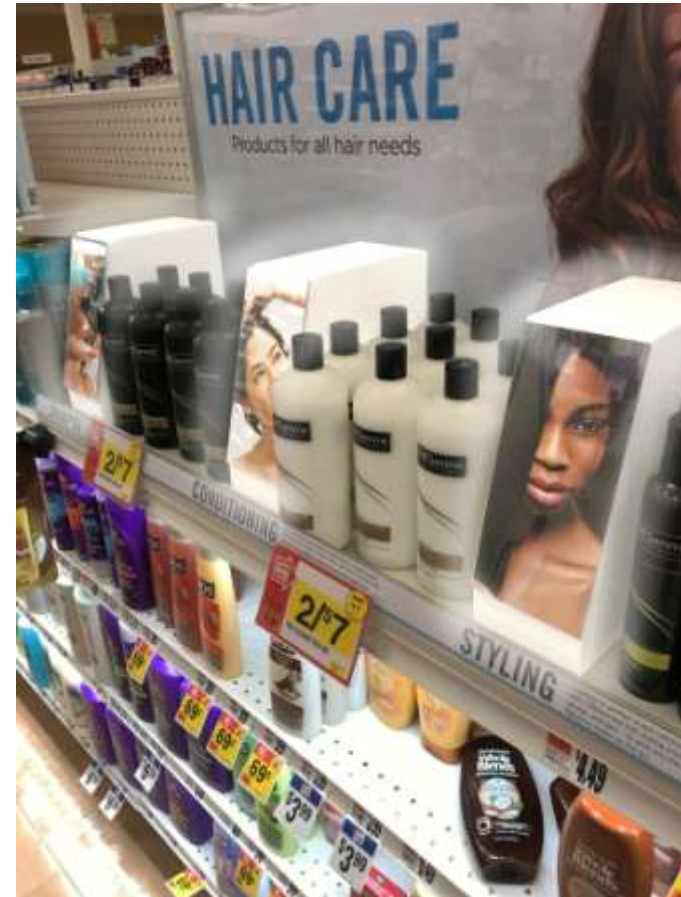
SIMPLE CLEAN DESIGN PROVIDES DOWN & BACKLIGHTING

UNIVERSAL LED CORNICE W/ EDGE-LIT SIGNAGE



STEALS LIGHT FROM CORNICE TO EDGE-LIT ACRYLIC & SS BRANDING /MESSAGING

LED SHELF LIGHTBOXES



LIGHTBOXES CAN BE POWERD FROM LOW VOLTAGE TRACK USED FOR UNDERSHELF LIGHTS

LED LIGHTING & PRODUCT MERCHANDISING (1' LIGHTING MODULES)



Proposition:

- “Task lights” offer an opportunity NOW to accelerate the marriage of Lighting and the IoT (the Internet of Things).
- The “task lights” we’re referring to are the ones we make--Cornice and Undershef Lights--that help shoppers do their task...SHOP.
- As a “task lighting” expert we can use sensors to “tune your lighting” to capture powerful shopper behavioral information. By using “task lighting” with sensors we can get the metrics we desire at retail as a further step towards integrating lighting and the IoT TODAY. Of course, sensors can also be used to turn lights on and off based on shopper proximity, as well as various other functions.
- Imagine sensors in the Cornices, Undershef Lights, and Panels we provide that could monitor consumer behavior adjacent to them?
- We are working with an IoT integrator that connects us to another company who would write the app and further connect the informational data back to us and you.

IoT PLUG & PLAY CABLING



Smart Power Servers

Smart Energy Routers

Power Lighting IT Security

Cables come with connectors attached, cut to length, labeled for specific applications.

Beauty

- Ceiling Luminaires
- Linear Lights
- Mobile Track Lights
- Recessed Lights
- Illuminated Department Signs
- Backlit Graphics
- Under Shelf Lights
- Illuminated Displays
- Security Systems
- Sensors & Data Collection



**Innovative Task Lighting
For Your Budget**



**Recycled Engineered
Solid Surface Materials**

Thank You!

60 Leonard Street
Metuchen, NJ 08840
TEL: 732-549-2866
FAX: 732-549-5521
Toll-Free: 866-450-6654

www.trinityinstore.com
www.grenite.com