

2017

**Efficient,
Innovative
Retail Lighting
Solutions**

www.trinityinstore.com

About



Efficient, Innovative Retail Lighting Solutions



TRINITY is a uniquely qualified retail solutions company. Its partners and associates have broad based experiences in brand marketing, retailing, the fixture/display industry, and operations as well as general management that give TRINITY a real differentiation in the market. The partners have helped to create and execute over the last fifteen years some of the most successful programs in the in-store marketing industry. The Metuchen, NJ based company is headquartered in a 120M square foot facility that includes offices, model shop, manufacturing, assembly and distribution.

Our goal is to provide brands, retailers, and service companies with superior, revenue building in-store marketing retail environments, displays, and custom fixtures. In this endeavor, TRINITY offers retail marketing/branding insights and in-store strategic problem solving and design.

In the process of servicing our customers with efficient, innovative retail solutions, we have developed a selection of innovative, available "task or project" lighting products to offer with simplicity of design, faster availability and the lowest possible prices. All of TRINITY lighting products meet US safety standards and are either UL or ETL listed. Though, we are now happy to offer select, available products, our specialty still rests in engineering customized solutions for our customers' needs.

LED Pencil Light

LED Pencil Light:

The TRINITY Pencil Light is a perfect multi-solution product. Its simple, elegant and versatile design allows for use in accent lighting, undershelf lighting, and sign or graphic backlighting. It is a low cost, low energy, highly efficient LED lighting solution that can be utilized in new areas and applications, or as a retrofit solution or replacement for T5 Fluorescents. The LED Pencil Light can be provided with a number of different customizable options including length, color temperature, mounting method, and power connection method. Some options for immediate purchase are provided on the next page. Contact TRINITY (information is at back) for additional lengths, color temperature and attachment means.

Product Specifications

- 24Vdc Input (12V optional, call for information)
- Available with 12 LED/ft or 18 LED/ft option
- Provided with magnetic or hardware attachment means
- Available in different sizes – 3ft and 4ft (call for additional size requests)
- High Efficiency: > 75lm/W; 12LEDs/ft = 1.5W/ft or 18LEDs/ft = 2.25W/ft
- LED Pencil Lights with un-messy curly cord can interconnect with each other using daisy chain cord connector or Low Voltage Power Strip attached to back of gondola.
- Proven Fast and Easy plug and play install
- Damp location (refrigeration) options available (Contact TRINITY for more information)
- Dimmable (Providing a low voltage dimming LED power supply is used to accompany light)
- External power supply sold separately
- For information on how many units can connect to power supply, see power supply compatibility sheet.



LED Pencil Light



Magnetic Tape



Neodymium Magnet Dots



Female Barrel Plug



Quick Connect Vertical Power Strip Plug

TRINITY PRODUCT NAME	PART NUMBER	Product Key Codes	
Super Slim Pencil Light	801A-LXXX-CTYY-CZZ-CLBB-DD-EFF		
A	XXX	YY	ZZ
Applicable Location Modifier	Length Modifier	Color Temperature Modifier	Connector Type Modifier
0 = Dry location	Ex: 046 would be 46" unit	Ex: 60 would be 6000K	01 = Female Barrel Plug
1 = Damp Location			02 = Male Barrel Plug
			03 = Vertical Power Strip Connector
			04 = Water Tight Molex Connector
BB	DD	FF	
Connector Length Modifier	LEDs per foot Modifier	Extrusion Modifier	
Ex: 30 would be 30" connector	12 = 12 LEDs per foot	00 = Standard Pencil Light	
	18 = 18 LEDs per foot	02 = Extrusion Enclosure (Tighter Beam Angle)	
To order use the product codes in the box to apply to product below			

LED Pencil Light	Description
8010-L046-CT60-C01-CL27-12-E00	LED Pencil Light; 46" Long; 6000K color temp; Female Barrel Plug; 12 LED/ft
8010-L034-CT60-C01-CL27-12-E00	LED Pencil Light; 34" Long; 6000K color temp; Female Barrel Plug; 12 LED/ft
8010-L046-CT41-C01-CL27-18-E00	LED Pencil Light; 46" Long; 4100K color temp; Female Barrel Plug; 18 LED/ft
8010-L034-CT41-C01-CL27-18-E00	LED Pencil Light; 34" Long; 4100K color temp; Female Barrel Plug; 18 LED/ft
8010-L046-CT60-C03-CL27-12-E00	LED Pencil Light; 46" Long; 6000K color temp; Vertical Power Strip Plug; 12 LED/ft
8010-L034-CT60-C03-CL27-12-E00	LED Pencil Light; 34" Long; 6000K color temp; Vertical Power Strip Plug; 12 LED/ft
8010-L046-CT41-C03-CL27-18-E00	LED Pencil Light; 46" Long; 4100K color temp; Vertical Power Strip Plug; 18 LED/ft
8010-L034-CT41-C03-CL27-18-E00	LED Pencil Light; 34" Long; 4100K color temp; Vertical Power Strip Plug; 18 LED/ft

*Spec Sheets & installation instructions available upon request. ** Lighting accessories provided on separate page. Pencil Light compatible with wire harnesses, vertical power strip and power supplies.

LED Universal Compression Light

LED Universal Compression Light 2.0:

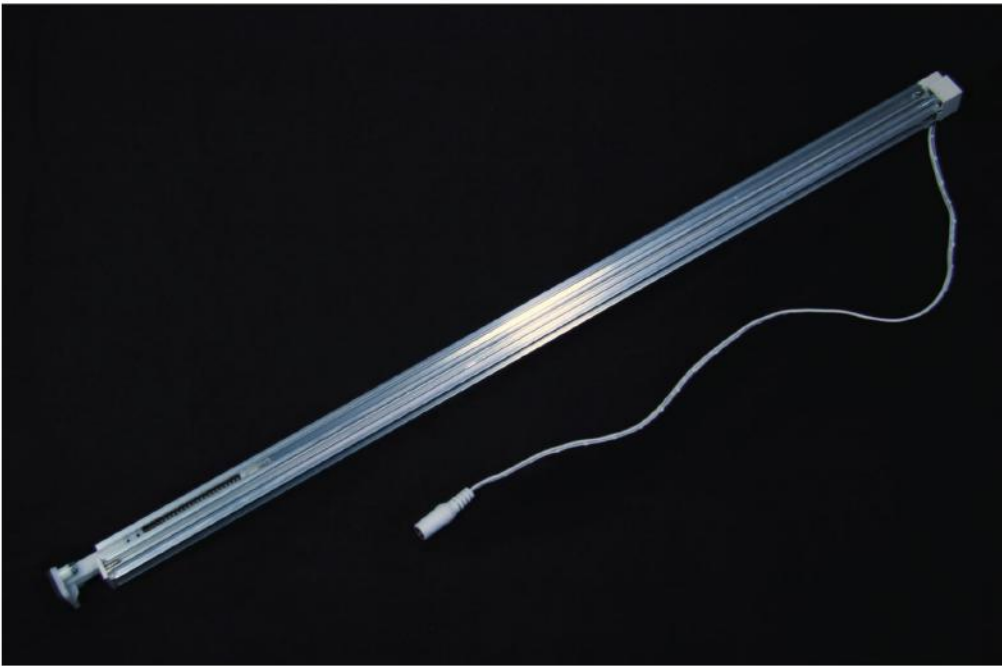
The LED Universal Compression Light is a linear LED solution designed primarily for under-shelf lighting purposes. Its thin design 3/4" x 1" allows it to fit under retail shelves seamlessly. The compression mount feature - much like a shower rod - permits the fixture to mount to non-metallic cabinets and shelves without adding holes from hardware and bracket mounting.

Product Specifications

- 24Vdc input voltage standard
- 3ft and 4ft lengths standard (All other lengths, call TRINITY for more information)
- Low Power - 3.25W/ft. power consumption (or 13W per 4')
- Excellent light distribution - 330lm/ft. raw light output
- Integrates with TRINITY Vertical Power Strip Shelf Lighting System
- Alternate input connection methods available (Contact TRINITY for additional information)
- Easy plug and play electrical install
- No tools or hardware required for fixture install
- Dimmable (Providing a low voltage dimming LED power supply is used to accompany light)
- For information on how many units can connect to power supply, see power supply compatibility sheet.



LED Universal Compression Light



Compression End



Female Barrel Plug



Vertical Power Strip Plug

TRINITY PRODUCT NAME	PART NUMBER	Product Key Codes		
Compression Light	804A-LXXX-CTYY-CZZ-CLBB			
A	XXX	YY	ZZ	
N/A = Dry Location Only - 0 always	Length Modifier Ex: 046 would be 46" unit	Color Temperature Modifier Ex: 60 would be 6000K	Connector Type Modifier 01 = Female Barrel Plug 02 = Male Barrel Plug 03 = Vertical Power Strip Connector	
BB				
Connector Length Modifier Ex: 30 would be 30" connector				
To order use the product codes in the box to apply to product below				

LED Universal Compression Light	Description
8040-L048-CT60-C01-CL27	Compression Light; 48" Long; 6000K color temp; Female Barrel Plug
8040-L036-CT60-C01-CL27	Compression Light; 36" Long; 6000K color temp; Female Barrel Plug
8040-L048-CT41-C01-CL27	Compression Light; 48" Long; 4100K color temp; Female Barrel Plug
8040-L036-CT41-C01-CL27	Compression Light; 36" Long; 4100K color temp; Female Barrel Plug
8040-L048-CT60-C03-CL27	Compression Light; 48" Long; 6000K color temp; Vertical Power Strip Plug
8040-L036-CT60-C03-CL27	Compression Light; 36" Long; 6000K color temp; Vertical Power Strip Plug
8040-L048-CT41-C03-CL27	Compression Light; 48" Long; 4100K color temp; Vertical Power Strip Plug
8040-L036-CT41-C03-CL27	Compression Light; 36" Long; 4100K color temp; Vertical Power Strip Plug

*Spec Sheets & installation instructions available upon request. ** Lighting accessories provided on separate page. Compression Light compatible with wire harnesses, vertical power strip and power supplies.

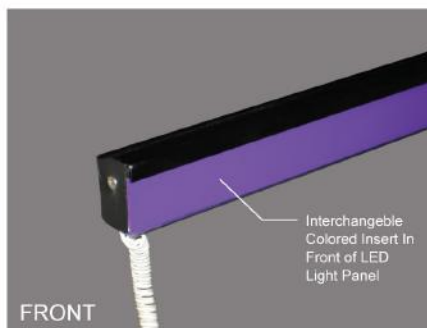
Tri-Light

Tri-Light:

The TRINITY TRI-LIGHT is a “one of a kind” shelf edge light that allows optimal light utilization in the smallest space possible. It is designed to attach to numerous manufacturers shelves and provides light to not only the product on the shelf above, and below, but also to the graphic strip inserted into the TRI-LIGHT as well.

Product Specifications

- 24Vdc input voltage standard
- Available in different sizes – 3ft and 4ft (call for additional size requests)
- Applicable for all retail shelf scenarios including damp location cooler cases.
- Light extrusion standard color is Black but can be custom run to other colors if requested. MOQ do apply.
- A variety of color and graphic strips can be added to the TRI LIGHT ticket channel
- Provided with mounting attachment method for numerous shelf applications. (CONTACT TRINITY TO COORDINATE MOUNTING METHODS.)
- Damp location (refrigeration) options available (Contact TRINITY for more information.
- All electrical connections are plug-and-play for swift and easy install.
- Compatible with TRINITY Vertical Power Strip (**Dry Location Only**)
- External power supply sold separately
- For information on how many units can connect to power supply, see power supply compatibility sheet.
- This item is not stocked and is by custom order only. Contact TRINITY directly for ordering details



LED Bar Light

LED Bar Light:

The TRINITY LED Bar Light is a linear LED solution designed for under-shelf lighting purposes. Its sleek 0.5" x 0.75" design allows it to fit under all retail shelves. It is outfitted with high energy neodymium magnets to mount to all steel retail shelving. Its aluminum body acts as a heatsink, keeping the LED board cool and significantly increasing the longevity of the LED Chips.

Product Specifications:

- *24Vdc input voltage standard*
- *Available in 1ft length increments; 2ft and 4ft lengths are standard (all other lengths, call TRINITY for more information)*
- *Low Power – 1.5W/ft and 3W/ft options available standard; All other custom power levels requests contact TRINITY.*
- *Excellent light distribution –120° LED Pitch angle; exceeding 80lm/W*
- *Integrates with TRINITY Vertical Power Strip Shelf Lighting System*
- *Alternate input connection methods available (Contact TRINITY for additional information)*
- *Easy plug and play electrical install*
- *No tools or hardware required for fixture install*
- *Dimmable (providing a low voltage dimming LED power supply is used to accompany light)*
- *For information on how many units can connect to power supply, see power supply compatibility sheet. (Total number of units not to exceed 85% of Power Supply rating)*



LED Bar Light



TRINITY PRODUCT NAME	PART NUMBER	Product Key Codes	
LED Bar Light	805A-LXXX-CTYY-CZZ-CLBB-DD-EFF		
A Application Location Modifier 0 = Dry Location 1 = Wet Location	XXX Length Modifier Ex: L046 would be 46" unit	YY Color Temperature Modifier Ex: 60 would be 6000K	ZZ Connector Type Modifier 01 = Female Barrel Plug 02 = Male Barrel Plug 03 = Vertical Power Strip Connector 04 = Water Tight Molex Connector
BB Connector Length Modifier Ex: 30 would be 30" connector	DD LEDs per Foot Modifier 06 = 6 LEDs per foot 12 = 12 LEDs per foot	FF Connector Type Modifier 01 = Female Barrel Plug 02 = Male Barrel Plug 03 = Vertical Power Strip Connector	
To order use the product codes in the box to apply to product below			

LED Bar Light	Description
8050-L046-CT50-C01-CL30-06-E15	LED Bar Light; 46" long; 5000K color temp; Female Barrel Plug; 6 LEDs/ft; 1.5 Watts per foot
8050-L022-CT50-C03-CL30-06-E15	LED Bar Light; 22" long; 5000K color temp; Vertical Power Strip; 6 LEDs/ft; 1.5 Watts per foot
8050-L046-CT40-C02-CL30-12-E20	LED Bar Light; 46" long; 4000K color temp; Male Barrel Plug; 12 LEDs/ft; 2.0 Watts per foot
8050-L034-CT40-C03-CL30-12-E20	LED Bar Light; 34" long; 4000K color temp; Vertical Power Strip; 12 LEDs/ft; 2.0 Watts per foot
8050-L022-CT40-C01-CL30-06-E15	LED Bar Light; 22" long; 4000K color temp; Female Barrel Plug; 6 LEDs/ft; 1.5 Watts per foot

** Some specifications kept in stock. Others have a MOQ of 500. Please contact TRINITY for more information.**

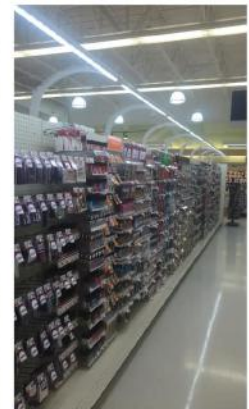
LED Universal Cornice Light

LED Universal Cornice Light:

The TRINITY Universal Cornice Light is a low power option for many retail or restaurant applications. The Universal Cornice is best suited as a T8/T12 fluorescent fixture replacement, but offers better features—it lights out and down, creating a beautiful wash over product below. The uniqueness of this system is the customization of its mounting method. Below are the details for its standard mounting option. Please call TRINITY for additional options or to discuss new customized option requests...it can be a Portrait Light; light thru a see-thru fascia; light behind and down from a fascia.

Product Specifications

- 24Vdc input voltage standard
- 3ft and 4ft lengths standard (all other lengths, call TRINITY for more information)
- 6.5W/ft. and 3.25W/ft. options available. (26W & 13W per 4 ft. respectively)
- Lumens, respectively, are 563 lms/ft and 281 lms/ft.
- Single input or daisy chain options available
- Damp location (refrigeration) options available (Contact TRINITY for more information)
- Frosted Lens offered standard (Contact TRINITY for no lens, or clear lens options)
- Standard hardware mounting (For additional customizable mounting options, Contact TRINITY).
- Easy plug and play install
- Dimmable (providing a low voltage dimming LED power supply is used to accompany light)
- For information on how many units can connect to power supply, see power supply compatibility sheet.



LED Universal Cornice Light



TRINITY PRODUCT NAME		PART NUMBER		Product Key Codes	
LED Universal Cornice Light		802A-LXXX-CTYY-CZZ-CLBB			
A	XXX	YY	ZZ		
Applicable Location Modifier	Length Modifier	Color Temperature Modifier	Connector Type Modifier		
0 = Dry location	Ex: 046 would be 46" unit	Ex: 60 would be 6000K	01 = Female Barrel Plug		
1 = Damp Location			02 = Male Barrel Plug		
			03 = Vertical Power Strip Connector		
BB			04 = Water Tight Molex Connector		
Connector Length Modifier			11 = Female Barrel Plug input Male Barrel plug Output (Daisy Chain)		
Ex: 30 would be 30" connector			12 = Water Tight Molex Connector (Daisy Chain)		
To order use the product codes in the box to apply to product below					

LED Universal Cornice Light	Description
8020-L048-CT60-C01-CL27	Universal Cornice Light; 48" Long; 6000K color temp; Female Barrel Plug
8020-L036-CT60-C01-CL27	Universal Cornice Light; 36" Long; 6000K color temp; Female Barrel Plug
8020-L048-CT41-C01-CL27	Universal Cornice Light; 48" Long; 4100K color temp; Female Barrel Plug
8020-L036-CT41-C01-CL27	Universal Cornice Light; 36" Long; 4100K color temp; Female Barrel Plug
8020-L048-CT60-C11-CL27	Universal Cornice Light; 48" Long; 6000K color temp; Female Barrel Plug input Male Barrel plug Output (Daisy Chain)
8020-L036-CT60-C11-CL27	Universal Cornice Light; 36" Long; 6000K color temp; Female Barrel Plug input Male Barrel plug Output (Daisy Chain)
8020-L048-CT41-C11-CL27	Universal Cornice Light; 48" Long; 4100K color temp; Female Barrel Plug input Male Barrel plug Output (Daisy Chain)
8020-L036-CT41-C11-CL27	Universal Cornice Light; 36" Long; 4100K color temp; Female Barrel Plug input Male Barrel plug Output (Daisy Chain)

*Spec Sheets & installation instructions available upon request. ** Lighting accessories provided on separate page. Universal Cornice Light compatible with wire harnesses, vertical power strip and power supplies.

LED Snap Frame & LED Panel Light

LED Snap Frame & LED Panel Light:

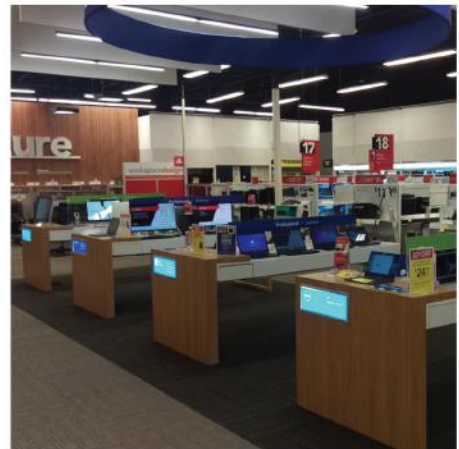
The TRINITY LED Snap Frame and LED Panel Light are great options to move away from cumbersome backlight fluorescent lighting. Their thin design allows for frame material cost savings and provides versatility for their usage, allowing them to fit into applications previous fluorescent designs would not permit.

Product Specifications

- 24Vdc input voltage standard
- These Panel lights are very slim, 1/4" - 5/16" (non-snap frame)
- Snap Frame and Non-Snap Frame options available
- Single sided and new Dual Sided lit options available
- Mounts portrait or landscape.
- Snap Frame clicks open at 90 degrees providing flexibility at retail.
- Standard sizes provided (custom size options available, contact TRINITY for details)
- Sizing Constraints – Single Sided 4ft x 9ft; Double Sided 2ft x 9ft
- Applicable for retail design, product accent lighting and signage lighting design.
- Standard color offered: 6000K (custom color options available, contact TRINITY for details)
- Standard frames offered with clear anodized finish (custom anodized or powder coating color options available, contact TRINITY for details)
- External Power Supply sold separately
- For information on how many units can connect to power supply, see power supply compatibility sheet.
- Custom sizes may be subject to minimum order quantity, contact TRINITY for more information



LED Light Panel



LED Snap Frame

LED Snap Frame

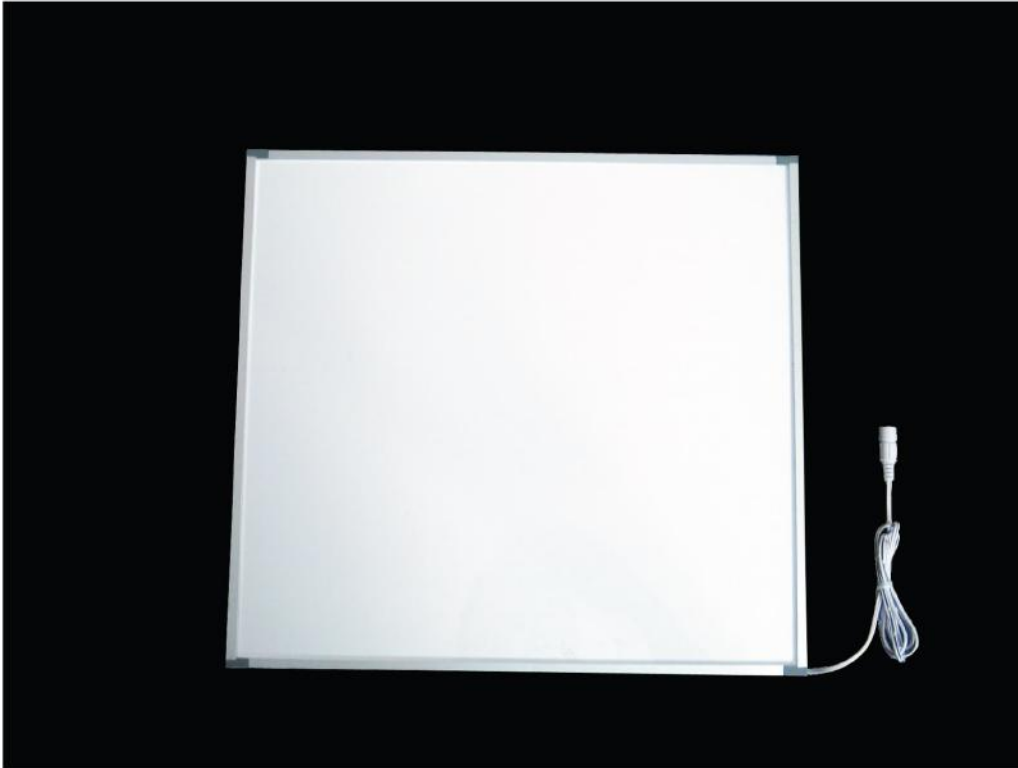


TRINITY PRODUCT NAME	PART NUMBER	Product Key Codes	
Snap Frame LED Panel	807A-XX-LYYY-WZZZ-TBB-CLCC-CTDD-CEE		
A N/A = Dry Location Only - 0 always	XX Single/Double sided modifier 00 = single sided 10 = double sided	YYY Length Modifier Ex: 048 would be 48" long unit	ZZZ Width Modifier Ex: 048 would be 48" wide unit
BB Acrylic Thickness Modifier Ex: 04 would be 4mm thick unit	CC Connector Length Modifier Ex: 30 would be 30" connector	DD Color Temperature Modifier Ex: 60 would be 6000K	EE Connector Type Modifier 01 = Female Barrel Plug 02 = Male Barrel Plug 03 = Vertical Power Strip Connector 11 = Female Barrel Plug Input Male Barrel plug Output (Daisy Chain)
To order use the product codes in the box to apply to product below			

LED Snap Frame	Description
8070-00-L012-W012-T04-CL36-CT65-C01	12" x 12" Snap Frame LED Panel; 6500K color temp; 36" long Female Barrel Plug
8070-00-L012-W024-T04-CL36-CT65-C01	12" x 24" Snap Frame LED Panel; 6500K color temp; 36" long Female Barrel Plug
8070-00-L012-W036-T04-CL36-CT65-C01	12" x 36" Snap Frame LED Panel; 6500K color temp; 36" long Female Barrel Plug
8070-00-L012-W048-T04-CL36-CT65-C01	12" x 48" Snap Frame LED Panel; 6500K color temp; 36" long Female Barrel Plug
8070-00-L024-W048-T04-CL36-CT65-C01	24" x 48" Snap Frame LED Panel; 6500K color temp; 36" long Female Barrel Plug

*Spec Sheets & installation instructions available upon request. ** Lighting accessories provided on separate page. LED Snap Frame compatible with wire harnesses, vertical power strip and power supplies.

LED Panel Light



TRINITY PRODUCT NAME	PART NUMBER	Product Key Codes	
LED Panel Light	806A-XX-LYYY-WZZZ-TBB-CLCC-CTDD-CEE		
A N/A = Dry Location Only - 0 always	XX Single/Double sided modifier 00 = single sided 10 = double sided	YYY Length Modifier Ex: 048 would be 48" long unit	ZZZ Width Modifier Ex: 048 would be 48" wide unit
BB Acrylic Thickness Modifier Ex: 04 would be 4mm thick unit	CC Connector Length Modifier Ex: 30 would be 30" connector	DD Color Temperature Modifier Ex: 60 would be 6000K	EE Connector Type Modifier 01 = Female Barrel Plug 02 = Male Barrel Plug 03 = Vertical Power Strip Connector
To order use the product codes in the box to apply to product below			

LED Panel Light	Description
8060-00-L012-W012-T04-CL36-CT65-C01	12" x 12" Edgelit LED Panel; 6500K color temp; 36" long Female Barrel Plug
8060-00-L012-W024-T04-CL36-CT65-C01	12" x 24" Edgelit LED Panel; 6500K color temp; 36" long Female Barrel Plug
8060-00-L012-W036-T04-CL36-CT65-C01	12" x 36" Edgelit LED Panel; 6500K color temp; 36" long Female Barrel Plug
8060-00-L012-W048-T04-CL36-CT65-C01	12" x 48" Edgelit LED Panel; 6500K color temp; 36" long Female Barrel Plug
8060-00-L024-W048-T04-CL36-CT65-C01	24" x 48" Edgelit LED Panel; 6500K color temp; 36" long Female Barrel Plug

*Spec Sheets & installation instructions available upon request. ** Lighting accessories provided on separate page. LED Panel Light compatible with wire harnesses, vertical power strip and power supplies.

TRINITY Neo-NEON LED Logo Panel

Trinity Neo-NEON LED Logo Panel:

*The new TRINITY Neo-NEON LED Logo Panel is TRINITY's answer to high cost, high power NEON signs. Utilizing edge-lit LED panel technology and high resolution digital printing, Logo signs can now be provided with a low power, low cost, long-lasting alternative. Custom shapes and designs can be developed from high resolution photos or renderings to create a lit sign panel as low as half the cost and consuming as little as half the power as a comparable NEON light. **This is a custom order only item. Contact TRINITY for further details.***



LED Retrofit Tube Light

LED Retrofit Tube Light:

The TRINITY LED Retrofit Tube Light is a linear LED solution designed for retrofitting into existing Fluorescent Fixtures. With a low initial lamp cost, and reduced energy consumption this lighting option can provide a return on investment in as little as 2 years.

Product Specifications

- *Ballast bypass and compatible options available*
- *Available for T5 and T8 fixtures*
- *Available in 2ft 3ft and 4ft lengths (4ft only for T5 replacement option)*
- *Low Power – Reduce energy from fluorescent T8 and T5 by 30 – 40%*
- *Excellent light distribution*
- *Rated to over 50,000 hrs.*
- *Available in various color temperatures*
- *Ballast compatible options require no tools or hardwiring*



LED Retrofit Tube Light



TRINITY PRODUCT NAME		PART NUMBER		Product Key Codes	
LED Retrofit Tube Light		4-TRAA- BB - CC - DD - EE			
A	BB	CC	DD		
Lamp Type	Length Modifier	Color Temperature Modifier	Power Consumption/Wattage Level		
Ex: T8, T5	Ex: 48 would be 48" unit or 4ft Unit	Ex: 35 would be 3500K, 40 would be 4000K	Ex: 08 = 8 Watt Power Draw		
EE					
Power Type					
Ex: PP = Plug & Play; BP = Bypass					
To order use the product codes in the box to apply to product below					

LED Retrofit Tube Light	Description
4-TRT8-48-40-15-PP	TRINITY T8 LAMP; 4FT LENGTH; 4000K COLOR TEMPERATURE; 15 WATT POWER DRAW; PLUG AND PLAY
4-TRT8-48-50-15-PP	TRINITY T8 LAMP; 4FT LENGTH; 5000K COLOR TEMPERATURE; 15 WATT POWER DRAW; PLUG AND PLAY
4-TRT8-48-40-18-PP	TRINITY T8 LAMP; 4FT LENGTH; 4000K COLOR TEMPERATURE; 18 WATT POWER DRAW; PLUG AND PLAY
4-TRT8-48-50-18-PP	TRINITY T8 LAMP; 4FT LENGTH; 5000K COLOR TEMPERATURE; 18 WATT POWER DRAW; PLUG AND PLAY
4-TRT5-48-40-15-PP	TRINITY T5 LAMP; 4FT LENGTH; 4000K COLOR TEMPERATURE; 15 WATT POWER DRAW; PLUG AND PLAY
4-TRT5-48-50-15-PP	TRINITY T5 LAMP; 4FT LENGTH; 5000K COLOR TEMPERATURE; 15 WATT POWER DRAW; PLUG AND PLAY

** Some specifications kept in stock. Others have a MOQ of 500. Please contact TRINITY for more information.**

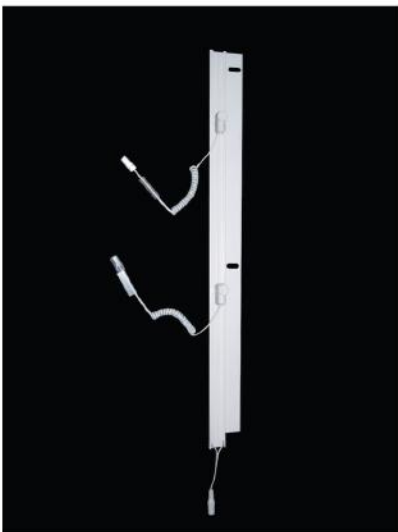
Lighting Accessories

TRINITY Vertical Power Strip Shelf Lighting System 3.0

The new TRINITY Vertical Power Strip 3.0 shelf lighting system works with all dry location TRINITY lighting products and allows you to adjust shelf displays and merchandise without needing to deal with tedious wire management. The advantages of this new system are numerous and include: flexible plan-o-gram changing, swift installation and shelf adjustments, and is aesthetically pleasing.

Product Specifications

- Acts as a conduit for 24Vdc power supply
- Designed to work with numerous gondola systems. 0.28" minimum space required between back of shelf and peg board/gondola backer.
- Standard length of 84" offered. (Can be cut to size, contact TRINITY for more information)
- Assembled with proprietary Quick Connect Plug for mating with LED power supply.
- System required that LED Fixture be equipped with Vertical Power Strip Connector Clip for compatibility.



Quick Connect Vertical Power Strip
w/ 2 Quick Connect Plug



Quick Connect Plug



Quick Connect Plug is adjustable

TRINITY PRODUCT NAME	PART NUMBER	Product Key Codes
Vertical Power Strip	88AA-LXXX	
AA	XXX	
N/A = Dry Location Only - 00 always	Length Modifier	
	Ex: 072 would be 72" unit	
To order use the product codes in the box to apply to product below		

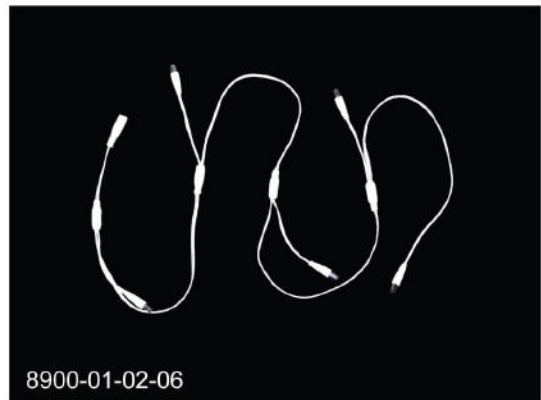
Lighting Accessories Cont.

TRINITY Daisy Chainable Power Supply

The TRINITY Daisy Chainable Power supply is designed for larger integrated lighting systems where multiple convenience receptacles are not available.

Product Specifications

- Power supply is provided with male plug and female receptacle AC cord set, so all that is needed to power an entire gondola run is a single receptacle.
- 100W and 40W options available (for additional options, Contact TRINITY)
- Non-daisy chain single input power supply also available
- 110Vac input
- 24Vdc output standard (For 12Vdc output, Contact TRINITY)



TRINITY PRODUCT NAME	PART NUMBER	Product Key Codes	
Power Supply	87AA-PXXX-MYYY-FZZZ-VBB-DLCC-CDD		
AA Applicable Location Modifier 00 = Dry location (determines connector) 10 = Damp Location (determines connector)	XXX Power Modifier Ex: 100 would be 100W max power; 040 would be 40W max power	YYY Male Cord Length Modifier Ex: 048 would 48" Long Male Input Cord	
ZZZ Female Cord Length Modifier Ex: 036 would 36" Long Male Input Cord Use L000 if not applicable, single input, non daisy chainable	BB Voltage Modifier Ex: 24 would be 24Vdc constant voltage	CC DC Connector Length Modifier Ex: 30 would be 30" connector	DD Connector Type Modifier 01 = Female Barrel Plug 02 = Male Barrel Plug"
To order use the product codes in the box to apply to product below			

Power Supplies	Description
8700-P100-M048-F036-V24-DL20-C02	100W daisy chain power supply, 48" male cord, 36" female cord, 24Vdc, 20" DC cord, Female Barrel Plug Connector
8700-P40-M048-F036-V24-DL20-C02	40W daisy chain power supply, 48" male cord, 36" female cord, 24Vdc, 20" DC cord, Female Barrel Plug Connector
8900-01-02-06	1 Female Barrel Plug Input, 5 Male barrel plug outputs
8900-02-02-08	1 Female Barrel Plug Input, 7 Female barrel plug outputs

*Spec Sheets & installation instructions available upon request.

Contacts



Contact Information:

Michael Flynn, Director of Lighting
mflynn@trinityinstore.com
Office: 732-549-2866, x 260
Toll Free: 877-450-6654

Jay Rakkenchath, Lighting Development Associate
jrakkenchath@trinityinstore.com
Office: 732-549-2866, x 291

Bruno Goncalves, Project Coordinator
bruno@trinityinstore.com
Office: 732-549-2866, x 257

Address:

60 Leonard Street
Metuchen, New Jersey 08840
Phone Number: 732-549-2866
Toll Free: 877-450-6654
Fax Number: 732-549-5521

Price List

Available Upon Request



Lighting by
TRINITY

www.trinityinstore.com



60 LEONARD STREET
METUCHEN, N.J. 08840
Phone: 732-549-2866
Fax: 732-549-5521
www.trinityinstore.com

Subject to technical
changes without
prior notice.

www.trinityinstore.com